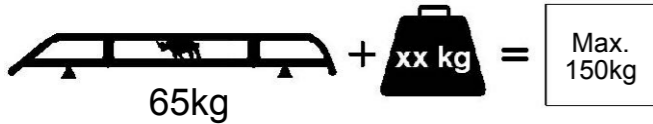
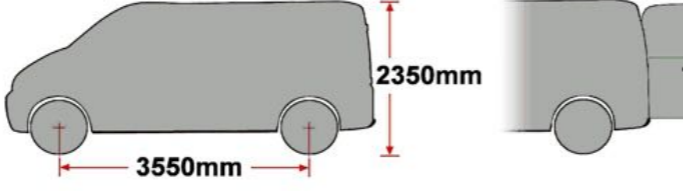
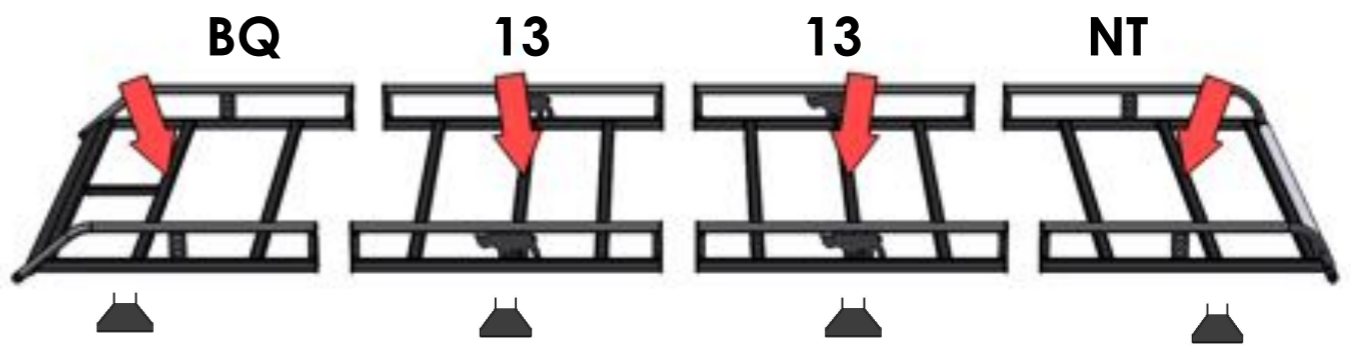
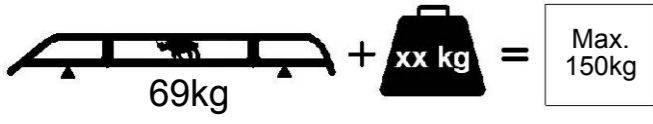
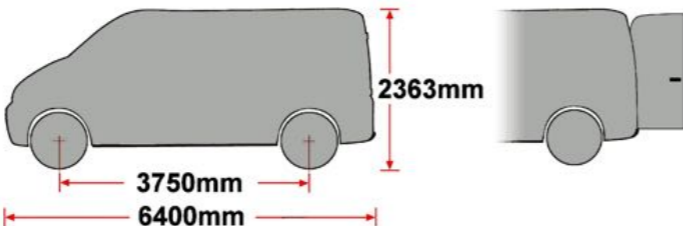
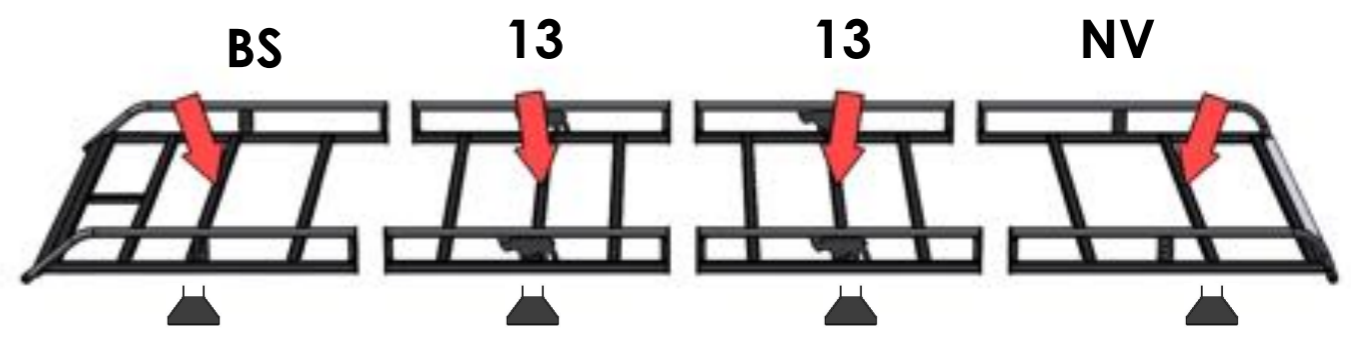
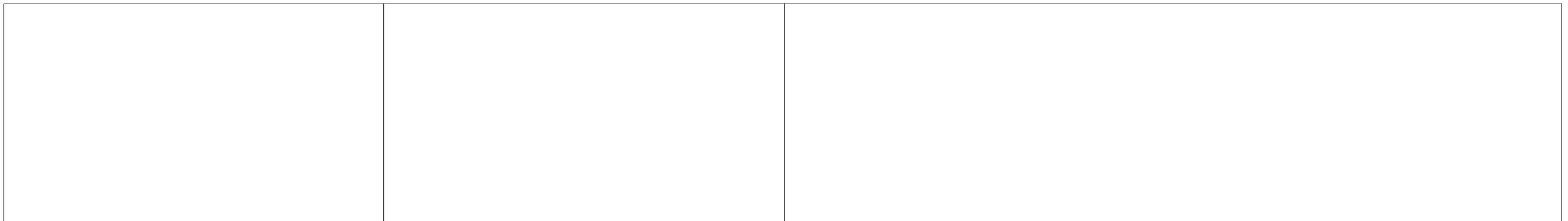


<p>EU/R 525</p>  <p>65kg + xx kg = Max. 150kg</p>	<p>OLD SPRINTER/LT 1996-2006 MWB, LOW ROOF, TWIN DOORS</p> 	
---	--	---

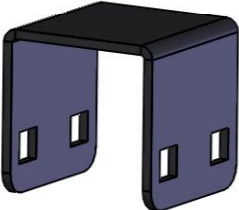
<p>EU/R 535</p>  <p>69kg + xx kg = Max. 150kg</p>	<p>TRANSIT 2000- JUMBO, MED ROOF, TWIN DOORS</p> 	
--	---	--

<p>EU/R 543</p>  <p>68kg + xx kg = Max. 150kg</p>	<p>CONVOY 1997-2006 LWB, LOW ROOF, TWIN DOORS</p> <p>N/A</p>	
---	---	---

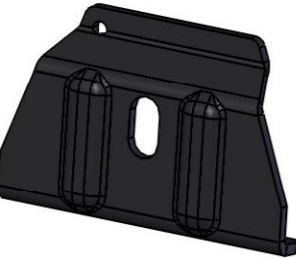




MS046 x 8



MS161 x 8

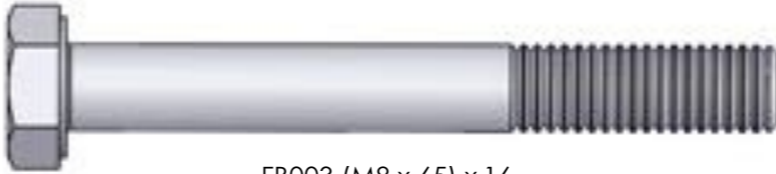


MS006 x 8

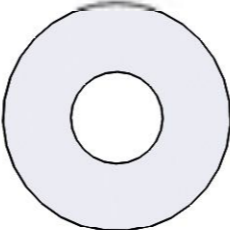


PS001-130 x 8

(1:1)



FB003 (M8 x 65) x 16



FW002 (M8) x 64



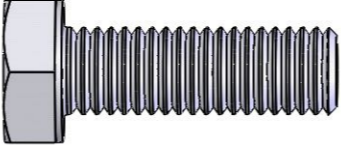
FN006 (M8) x 36



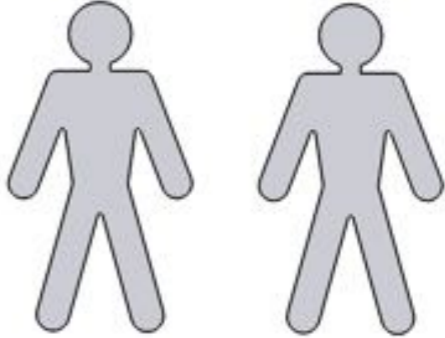
FS030 (M8 x 35) x 8



PS045 (M8) x 8



FS015 (M8 x 25) x 12



13mm x 2

